

Tel : +90 312 2042285
Fax : +90 312 2220976
AFS : LTAAEYX
e-mail: secil.ucpinarlar@dhmi.gov.tr
e-mail: aipgm@dhmi.gov.tr

TÜRKİYE
AIS
DHMI Genel Müdürlüğü
Havacılık Bilgi Yönetimi (AIM)
Şube Müdürlüğü
06560 Etiler - ANKARA

AIRAC
AIP
Supplement 02
06 MAR 2025

Yürürlük Tarihi: 17 Nisan 2025 / Effective Date: 17 April 2025

(17 Nisan 2025, 00.00 UTC'den 15 Mayıs 2025, 00.00 UTC'ye kadar geçerlidir. / Valid from 17 April 2025, 00.00 UTC to 15 May 2025, 00.00 UTC)

İSTANBUL SABİHA GÖKÇEN HAVALİMANI / İSTANBUL SABİHA GÖKÇEN AERODROME

Bu AIRAC SUP aşağıdaki ekleri içerir. / This AIRAC SUP includes following Appendices.

Appendix 1: İstanbul Sabiha Gökçen Havalimanı Standart Aletle Kalkış Usulleri (SID-20, 20A, 21, 21A) / İstanbul Sabiha Gökçen Aerodrome Standard Instrument Departure Procedures (SID-20, 20A, 21, 21A)

Not: Bu AIRAC SUP ile Appendix 1'de yer alan SID'ler 15 Mayıs 2025 yürürlük tarihli 05/25 nolu AIRAC AIP AMDT ile AIP'ye dahil edilecektir.

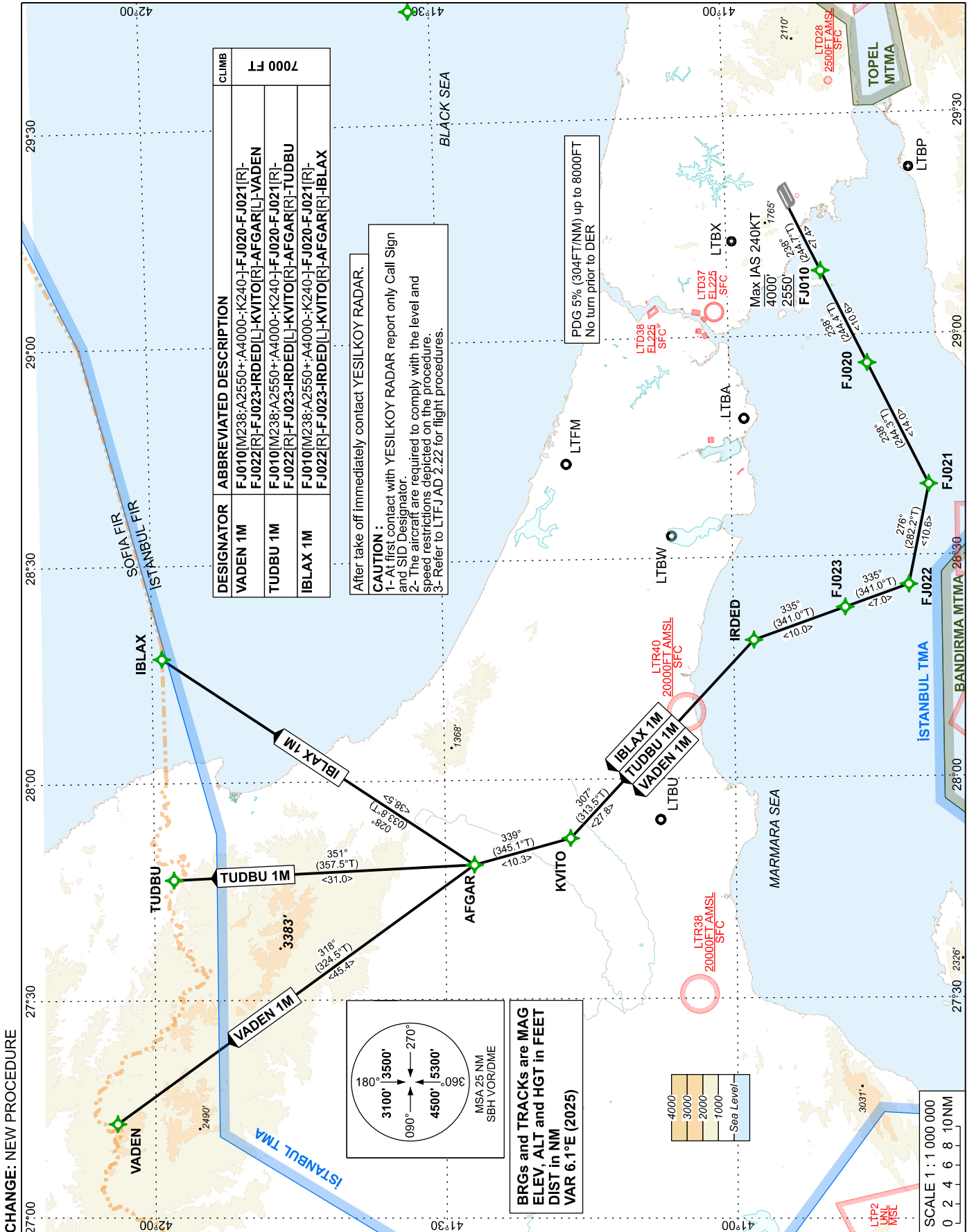
Note: These SID's at Appendix 1 of this AIRAC SUP will be incorporated in AIP by AIRAC AIP AMDT numbered 05/25 WEF 15 May 2025.

STANDARD DEPARTURE
CHART INSTRUMENT (SID)
ICAO

TRANSITION ALTITUDE
12000 FT

TWR: 118.8-120.925
APP: 126.425-127.825

İSTANBUL/S.GÖKÇEN
RNAV (GNSS)
RWY 24R



İSTANBUL/SABIHA GOKCEN AIRPORT RNAV (GNSS) SID RWY 24R

Executed with LTFM RNAV (GNSS) STAR RWY 34/35/36

Type	Fix identifier (Waypoint name)	Latitude	Longitude
FlyBy	AFGAR	41:27:01.00N	027:48:25.00E
FlyBy	FJ010	40:50:21.88N	029:08:43.52E
FlyBy	FJ020	40:45:45.10N	028:56:06.16E
FlyBy	FJ021	40:39:39.12N	028:39:33.24E
FlyBy	FJ022	40:41:51.99N	028:25:59.70E
FlyBy	FJ023	40:48:28.42N	028:23:00.32E

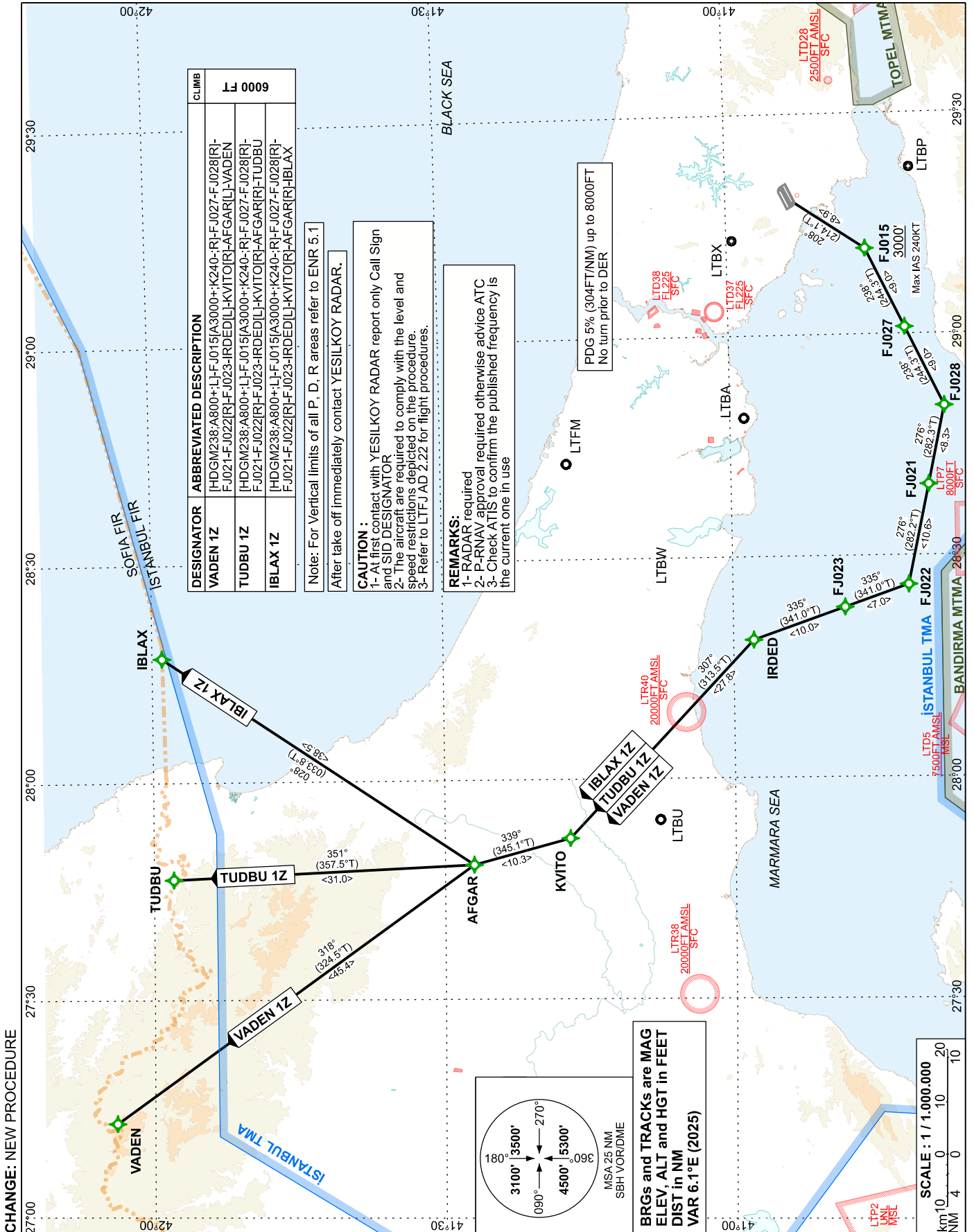
Type	Fix identifier (Waypoint name)	Latitude	Longitude
FlyBy	IBLAX	41:58:59.00N	028:17:09.00E
FlyBy	IRDED	40:57:56.13N	028:18:42.37E
FlyBy	KVITO	41:17:04.45N	027:51:56.34E
FlyBy	TUDBU	41:58:00.00N	027:46:37.00E
FlyBy	VADEN	42:03:56.00N	027:12:58.00E

STANDARD DEPARTURE
CHART INSTRUMENT (SID)
ICAO

TRANSITION ALTITUDE
12000 FT

TWR: 118.8-120.925
APP: 126.425-127.825

İSTANBUL/S.GÖKÇEN
RNAV (GNSS)
RWY 24L



İSTANBUL/SABIHA GOKCEN AIRPORT RNAV (GNSS) SID RWY 24L

Executed with LTFM RNAV (GNSS) STAR RWY 34/35/36

Type	Fix identifier (Waypoint name)	Latitude	Longitude
FlyBy	AFGAR	41:27:01.00N	027:48:25.00E
FlyBy	FJ015	40:45:44.67N	029:11:36.96E
FlyBy	FJ021	40:39:39.12N	028:39:33.24E
FlyBy	FJ022	40:41:51.99N	028:25:59.70E
FlyBy	FJ023	40:48:28.42N	028:23:00.32E
FlyBy	FJ027	40:41:49.69N	029:00:53.54E

Type	Fix identifier (Waypoint name)	Latitude	Longitude
FlyBy	FJ028	40:37:53.69N	028:50:11.34E
FlyBy	IBLAX	41:58:59.00N	028:17:09.00E
FlyBy	IRDED	40:57:56.13N	028:18:42.37E
FlyBy	KVITO	41:17:04.45N	027:51:56.34E
FlyBy	TUDBU	41:58:00.00N	027:46:37.00E
FlyBy	VADEN	42:03:56.00N	027:12:58.00E