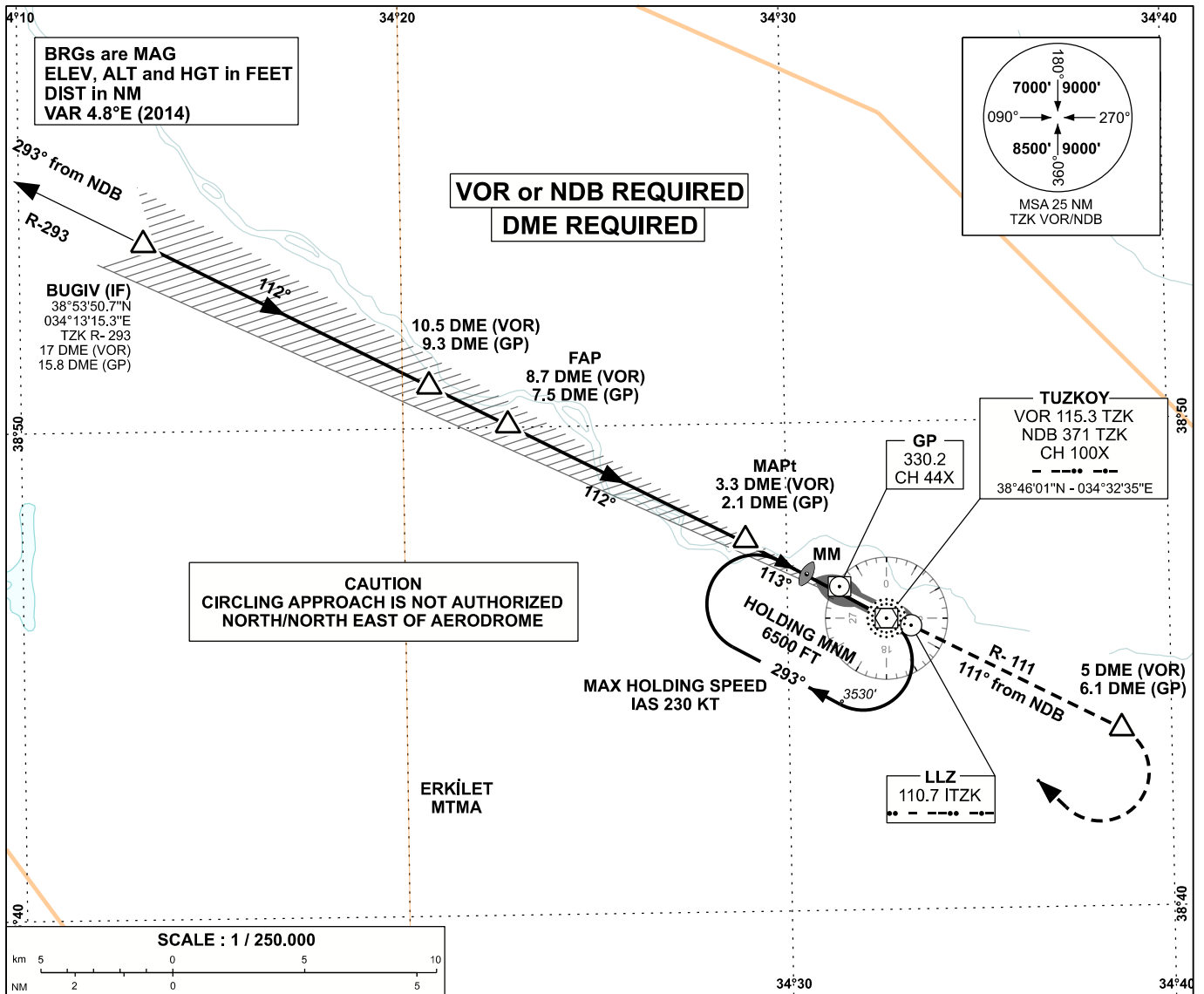


**INSTRUMENT  
APPROACH  
CHART - ICAO**

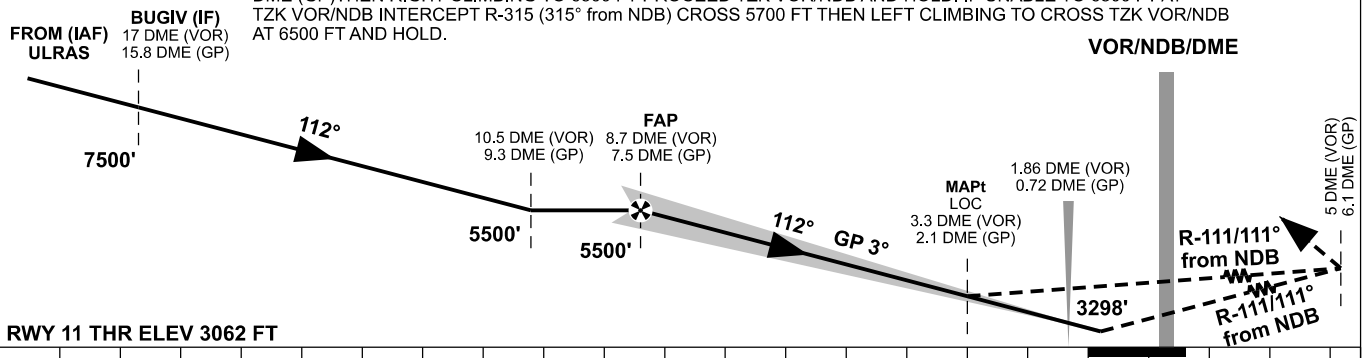
APP	120.350	AD ELEV	3090 FT
TWR	119.250	TRANSITION ALTITUDE	10 000 FT
ATIS	119.375		

**KAPADOKYA  
ILS Z CAT I or LOC Z  
RWY 11**



**MISSED APPROACH**

MAX IAS 185 KT UNTIL INBOUND TO TZK VOR/NDB. CLIMB ON R-111 (111° from NDB) UNTIL 5 DME (VOR)/6.1 DME (GP) THEN RIGHT CLIMBING TO 6500 FT PROCEED TZK VOR/NDB AND HOLD. IF UNABLE TO 6500 FT AT TZK VOR/NDB INTERCEPT R-315 (315° from NDB) CROSS 5700 FT THEN LEFT CLIMBING TO CROSS TZK VOR/NDB AT 6500 FT AND HOLD.



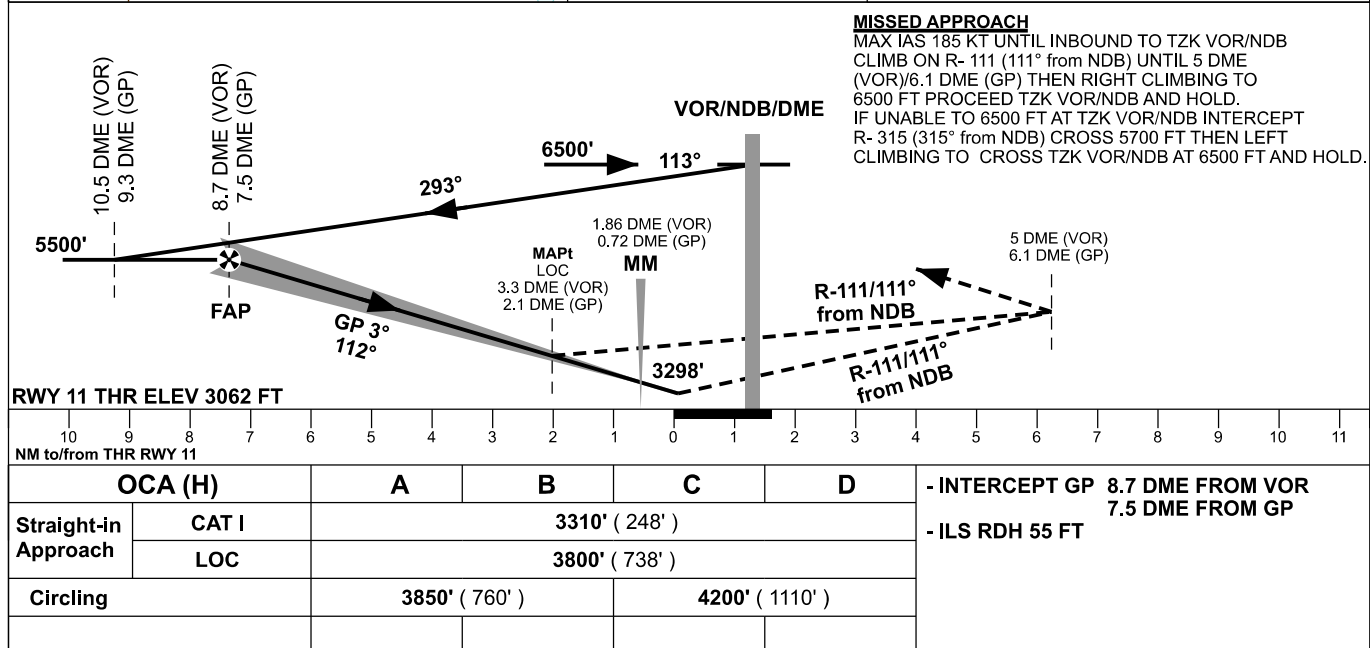
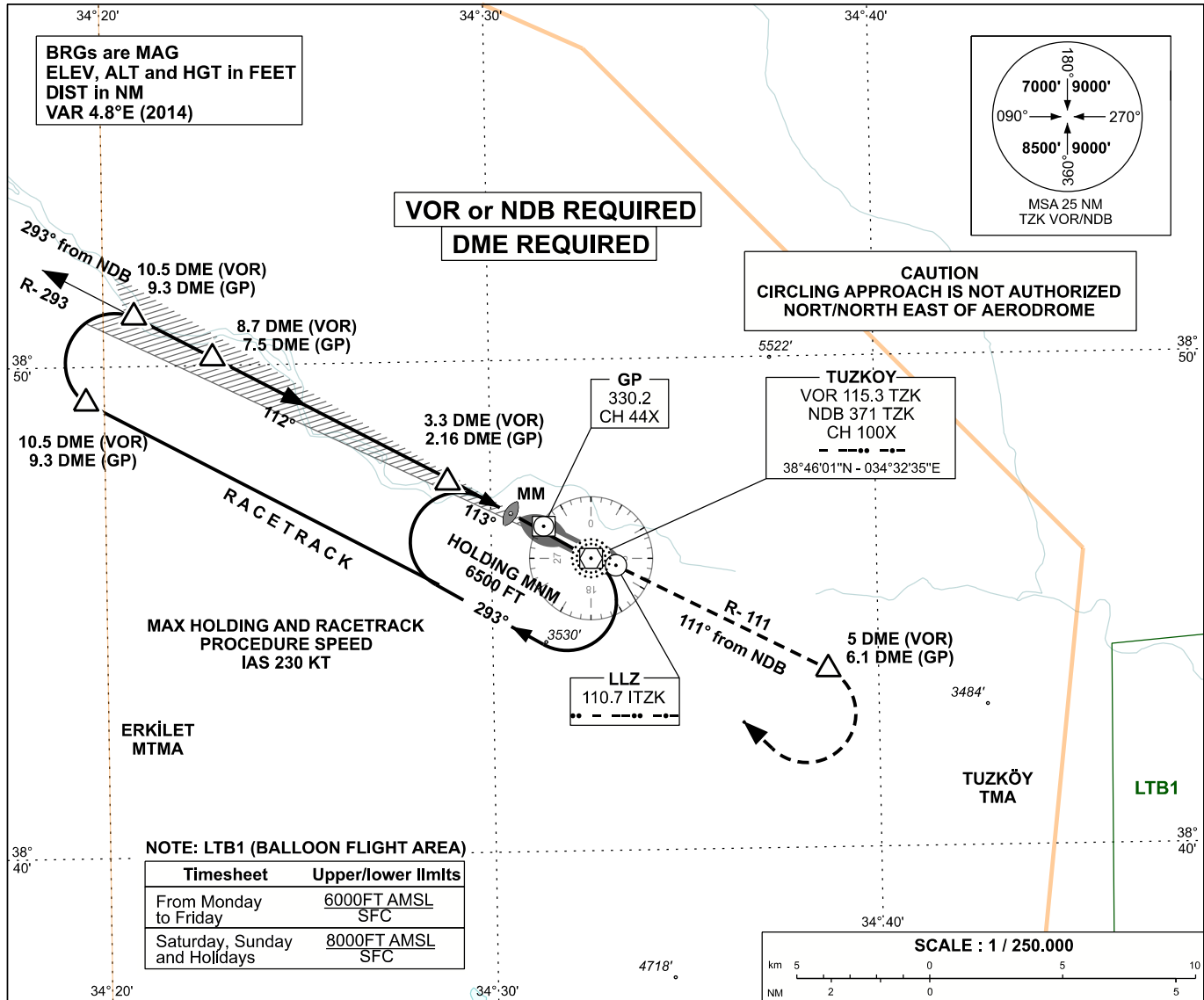
OCA (H)		A	B	C	D	- INTERCEPT GP 8.7 DME FROM VOR 7.5 DME FROM GP - ILS RDH 55 FT
Straight-in Approach	CAT I	3310' ( 248' )				
	LOC	3800' ( 738' )				
Circling		3850' ( 760' )		4200' ( 1110' )		

CHANGE: "VOR or NDB REQUIRED" NOTE IS ADDED

KAPADOKYA  
ILS Y CAT I or LOC Y  
RWY 11

APP	120.350	AD ELEV	3090 FT
TWR	119.250	TRANSITION ALTITUDE	10 000 FT
ATIS	119.375		

INSTRUMENT  
APPROACH  
CHART - ICAO



CHANGE: "VOR or NDB REQUIRED" NOTE IS ADDED

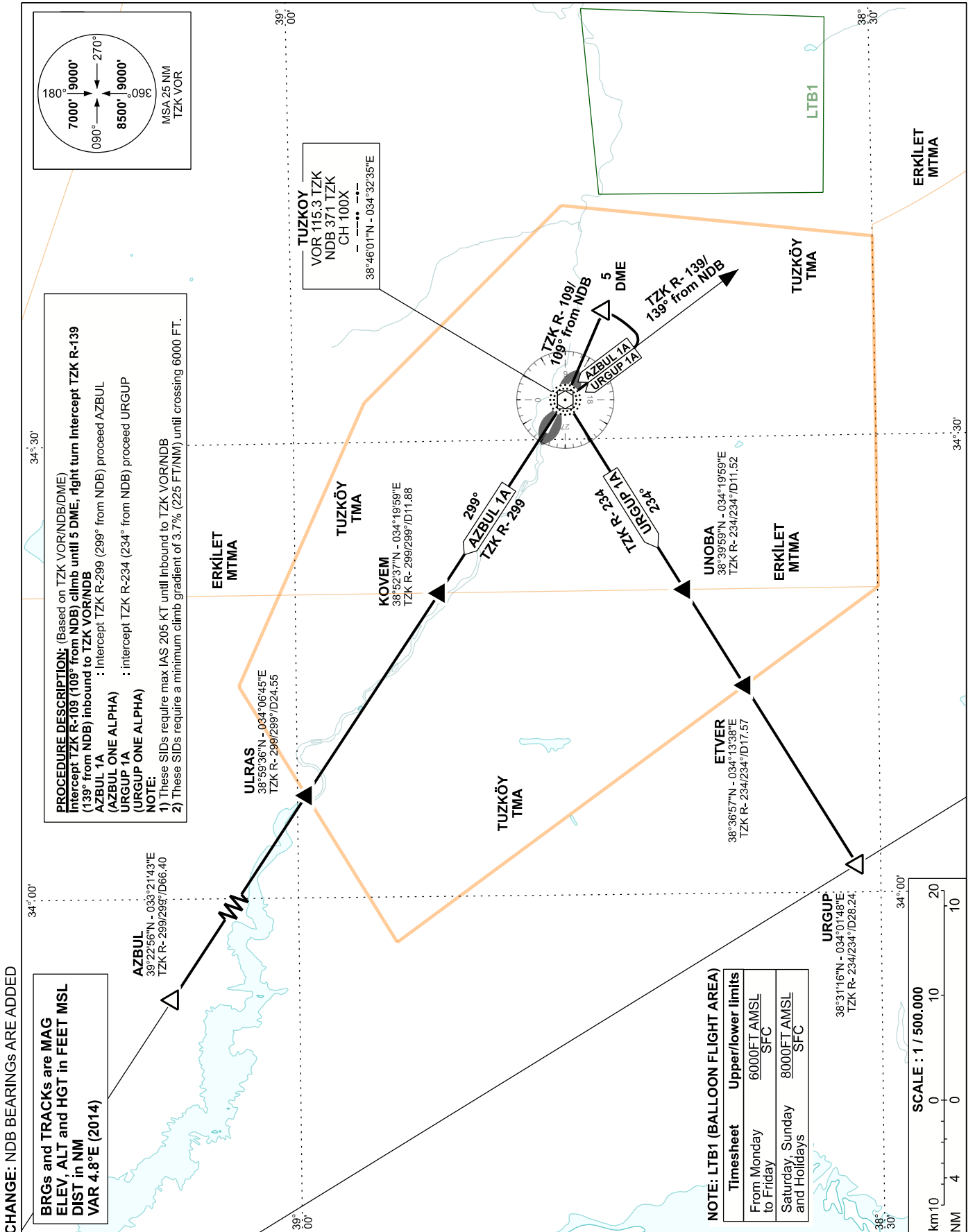
STANDARD DEPARTURE  
CHART INSTRUMENT (SID)  
ICAO

TRANSITION ALTITUDE  
10 000 FT

TWR : 119.250  
APP : 120.350

KAPADOKYA

RWY 11



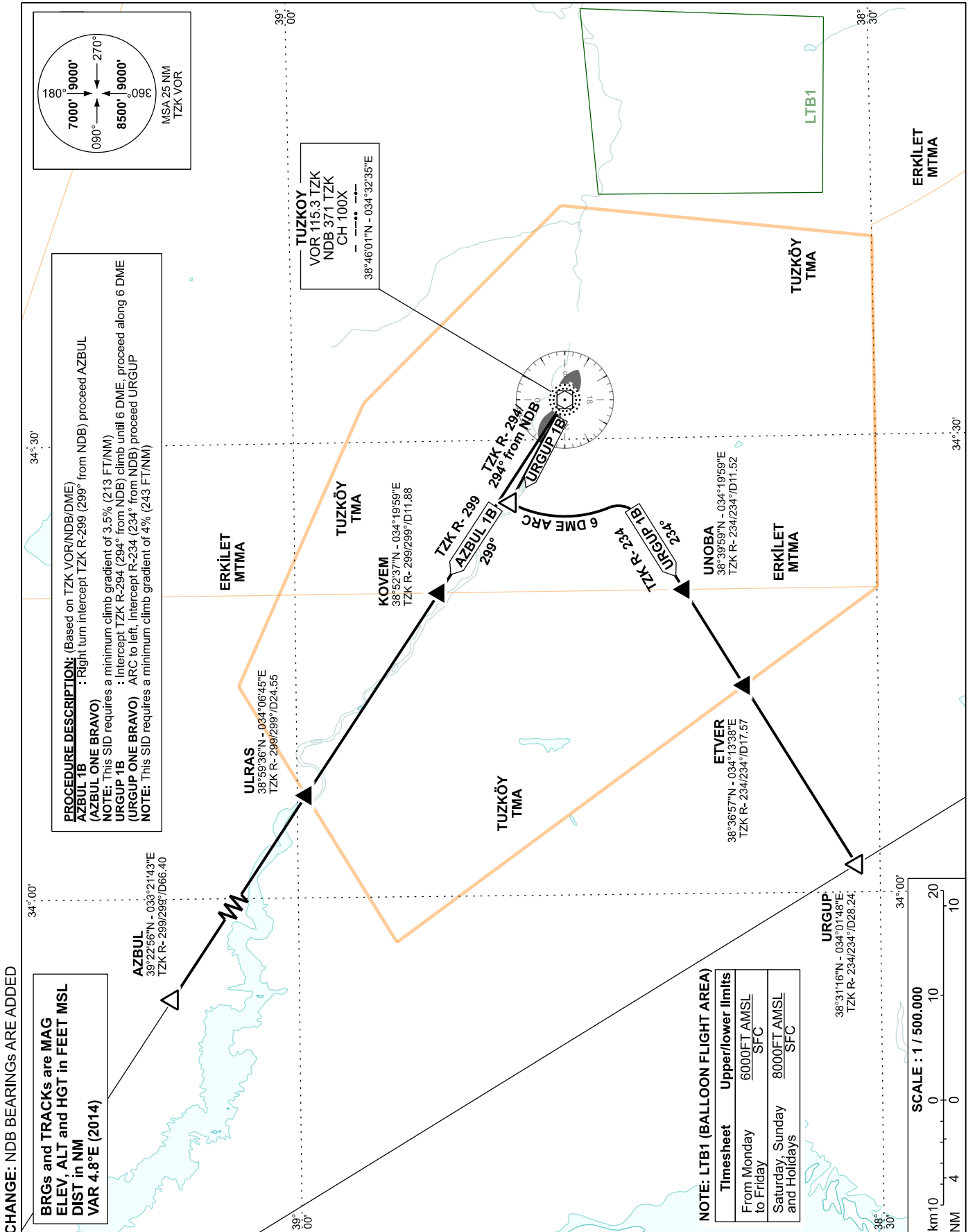
STANDARD DEPARTURE  
CHART INSTRUMENT (SID)  
ICAO

TRANSITION ALTITUDE  
10 000 FT

TWR : 119.250  
APP : 120.350

KAPADOKYA

RWY 29



STANDARD ARRIVAL CHART  
INSTRUMENT (STAR) - ICAO

TRANSITION ALTITUDE  
10 000 FT

APP : 120.350  
TWR : 119.250

KAPADOKYA

RWY 11/29

